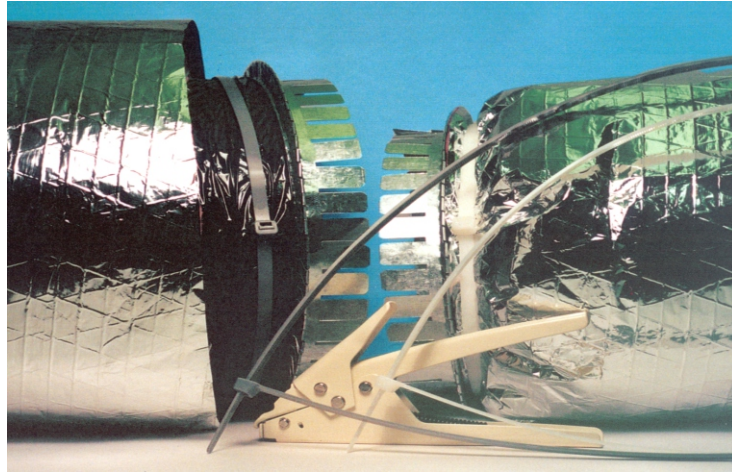


# HVAC DUCT STRAPS



## HVAC DUCT STRAPS

- Easier - Angled tail provides quicker initial insertion alignment and tail finger grips allow easier handling and tightening
- Safer - Rounded edges provide added safety and eliminates insulation damage
- UL Listed for use with UL non-metallic air ducts and air connectors

ACT Part Number	Color & Material	Length Inch/mm	Width Inch/mm	Thickness Inch/mm	Tensile Strength	Bundle Dia Inch/mm	UL-CSA* Mil-Spec	Per Bag	Per Case
AL-36-175-9-L	Natural Nylon 66	37.25/946.1	.340/8.636	.090/2.286	175lb/778n	11.00/279.40	UL 181B-C MS3367-13	50	500
AL-36-175-0-L	UV Black Nylon 66								
AL-48-175-9-L	Natural Nylon 66	48.56/1233.4	.340/8.636	.090/2.286	175lb/778n	14.50/368.30	UL 181B-C MS3367-16	50	500
AL-48-175-8-L	Gray Nylon 66								
AL-48-175-0-L	UV Black Nylon 66								

\* Also rated UL & CSA Type 21 Positioning Device, and UL AH-2

### AL-300 Installation Tool



- Durable tension and cut off tool designed for larger cable ties (120 & 175 lb)
- Quickly tensions and cuts off excess strap
- No sharp protrusions to cause snags, cuts, or abrasions to cables, hoses, or user

**ACT**  
**ADVANCED CABLE TIES, INC.**  
 245 Suffolk Lane, Gardner, MA 01440  
 Phone: 800.861.7228 - Fax: 978.630.3999  
 sales@actfs.com

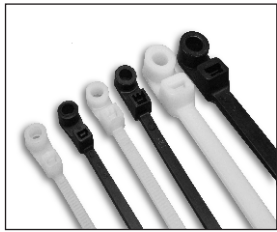


# Additional HVAC Products

## STANDARD CABLE TIES

ACT Part Number	Color & Material	Length Inch/mm	Width Inch/mm	Thickness Inch/mm	Tensile* Strength	Bundle Dia Inch/mm	UL-CSA Mil-Spec	Per Bag	Per Case
AL-04-18-9-C	Natural Nylon 66	4.12/104.77	0.09/2.41	0.04/1.06	18lb/80n	0.87/22.22	Type 21	100	10,000
AL-04-18-0-C	UV Black Nylon 66						MS3367-4		
AL-05-40-9-C	Natural Nylon 66	5.84/148.33	0.14/3.55	0.04/1.24	40lb/178n	1.43/36.42	Type 21	100	10,000
AL-05-40-0-C	UV Black Nylon 66						MS3367-5		
AL-07-50-9-C	Natural Nylon 66	7.56/192.07	0.18/4.57	0.05/1.32	50lb/222n	1.87/47.62	Type 21S	100	10,000
AL-07-50-0-C	UV Black Nylon 66						MS3367-1		
AL-11-50-9-C	Natural Nylon 66	11.25/285.75	0.18/4.57	0.05/1.32	50lb/222n	3.06/77.77	Type 21S	100	5,000
AL-11-50-0-C	UV Black Nylon 66						MS3367-7		
AL-14-50-9-C	Natural Nylon 66	14.35/364.49	0.18/4.57	0.05/1.32	50lb/222n	4.00/101.60	Type 21S	100	5,000
AL-14-50-0-C	UV Black Nylon 66						MS3367-2		
AL-14-120-9-C	Natural Nylon 66	14.82/376.63	0.30/7.62	0.07/1.93	120lb/534n	4.06/103.12	Type 21S	100	2,000
AL-14-120-0-C	UV Black Nylon 66						MS3367-3		

## MOUNTING HOLE CABLE TIES



ACT Part Number	Color & Material	Length* Inch/mm	Tensile Strength	Mech'l Strength	Screw Size	Bundle Dia Inch/mm	Per Bag	Per Case
AL-05-30-MH-9-C	Natural Nylon 66	6.12/155.57	40lb/180n	40lb/180n	#8	1.40/35.50	100	10,000
AL-05-30-MH-0-C	UV Black Nylon 66							
AL-07-50-MH-9-C	Natural Nylon 66	8.00/203.20	50lb/222n	45lb/200n	#10	1.87/47.60	100	5,000
AL-07-50-MH-0-C	UV Black Nylon 66							
AL-11-50-MH-9-C	Natural Nylon 66	11.50/292.10	50lb/222n	45lb/200n	#10	3.06/77.70	100	5,000
AL-11-50-MH-0-C	UV Black Nylon 66							
AL-14-50-MH-9-C	Natural Nylon 66	14.50/368.30	50lb/222n	45lb/200n	#10	4.00/101.6	100	5,000
AL-14-50-MH-0-C	UV Black Nylon 66							

\*6" COO: CN

## WIRE CONNECTORS



ACT Part Number	Color	Per Box	Per Case
AL-ACS-GY-C	Gray	100	1,000
AL-ACS-BL-C	Blue	100	1,000
AL-ACS-OR-C	Orange	100	1,000
AL-ACS-YW-C	Yellow	100	1,000
AL-ACS-RD-C	Red	100	1,000

COO: CN

**ACT**  
**ADVANCED CABLE TIES, INC.**  
 245 Suffolk Lane, Gardner, MA 01440  
 Phone: 800.861.7228 - Fax: 978.630.3999  
 sales@actfs.com

Advanced Cable Ties carries an extensive line of cable tie products and accessories.

Please visit our website or contact our Sales or Customer Service team for more information.

### STANDARD CABLE TIES

MINIATURE - 18 LB SERIES  
 INTERMEDIATE - 40 LB SERIES  
 STANDARD - 50 LB SERIES  
 LIGHT HEAVY DUTY - 120 LB SERIES  
 HEAVY DUTY - 175 LB SERIES  
 EXTRA HEAVY DUTY - 250 LB SERIES  
 MIL-SPEC  
 COLORS  
 CONVENIENCE PACKAGING

### SPECIALTY PACKS, KITS & COLOR ASSORTMENTS

### SPECIALTY CABLE TIES

DUAL LOOP SERIES  
 MOUNTING HOLE SERIES  
 FIR TREE SERIES  
 PUSH MOUNT & PUSH MOUNT WING  
 RELEASABLE - EXTENDED PAWL & TAB  
 AIR HANDLING  
 AIR HANDLING MOUNTING HOLE  
 IDENTIFICATION & FLAG TIES  
 DOUBLE HEAD

### ENGINEERED MATERIALS

NYLON 12 - SOLAR  
 COLD WEATHER  
 HEAT STABILIZED  
 IMPACT RESISTANT  
 METAL DETECTABLE  
 STAINLESS STEEL - UNCOATED & COATED

### TOOLS

REMOVAL  
 INSTALLATION / TENSION

### CABLE TIE ACCESSORIES

MOUNTING BASES  
 MOUNTS  
 CLAMPS

### WIRE ROUTING & ABRASION PROTECTION

SPLIT LOOM  
 SPIRAL WRAP

### CONDUCTIVITY

TERMINALS & WIRE CONNECTORS